

Science 7 - Numerical Response Questions - Plants for Food and Fibre

1. From **plant to final product** was a topic you studied in this unit. There are plants that are used to produce certain products. Match the product with the plant it is derived from.

- 1 canola
- 2 cocoa tree
- 3 sugar beets
- 4 seaweed

_____ ice cream
 _____ potato chips
 _____ chocolate
 _____ sugar crystals

	.	.	
0	0	0	0
1	1	1	1
2	2	2	2
3	3	3	3
4	4	4	4
5	5	5	5
6	6	6	6
7	7	7	7
8	8	8	8
9	9	9	9

2. From **plant to final product** was a topic you studied in this unit. There are plants that are used to produce certain products. Match the product with the plant it is derived from.

- 1 disposable diapers
- 2 sails
- 3 linen paper
- 4 plastics

_____ hemp
 _____ flax
 _____ cotton
 _____ wood pulp

	.	.	
0	0	0	0
1	1	1	1
2	2	2	2
3	3	3	3
4	4	4	4
5	5	5	5
6	6	6	6
7	7	7	7
8	8	8	8
9	9	9	9

3. From **plant to final product** was a topic you studied in this unit. There are plants that are used to produce certain products. Match the plant with its use.

- 1 wood alcohol
- 2 castor bean oils
- 3 latex
- 4 poppy seed pod

_____ medicine
 _____ transportation
 _____ fuel
 _____ lubricant

	.	.	
0	0	0	0
1	1	1	1
2	2	2	2
3	3	3	3
4	4	4	4
5	5	5	5
6	6	6	6
7	7	7	7
8	8	8	8
9	9	9	9

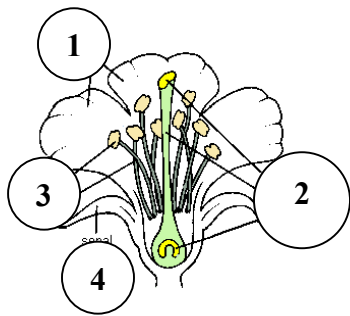
4. There are many different kinds of **stems**. Match the description with the type of stem it describes.

- 1 grows horizontally on the ground (runner)
- 2 underground stems
- 3 fleshy horizontal stems
- 4 flattened stems

_____ corms
 _____ cacti
 _____ strawberry plant
 _____ cattails

	.	.	
0	0	0	0
1	1	1	1
2	2	2	2
3	3	3	3
4	4	4	4
5	5	5	5
6	6	6	6
7	7	7	7
8	8	8	8
9	9	9	9

5. **Flower Parts** - identify each correct part



_____ sepal
 _____ stamen
 _____ pistil
 _____ petal

	.	.	
0	0	0	0
1	1	1	1
2	2	2	2
3	3	3	3
4	4	4	4
5	5	5	5
6	6	6	6
7	7	7	7
8	8	8	8
9	9	9	9

6. There are many different kinds of **farming practices** that help to save the soil. Match the description with the type of farm practice it describes.

- 1 shelter belts
- 2 summer fallow
- 3 zero-tillage
- 4 forages

_____ leave stubble on the field
 _____ plant rows of trees
 _____ crop rotation (vegetables)
 _____ cultivate to control weeds

	.	.	
0	0	0	0
1	1	1	1
2	2	2	2
3	3	3	3
4	4	4	4
5	5	5	5
6	6	6	6
7	7	7	7
8	8	8	8
9	9	9	9