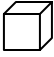





Science 7 - Numerical Response Questions - Planet Earth

Sample ...

1. Match the mineral with the type of crystal it makes.
(As outlined on p. 355 in SF7)

1	cubic 	3	monoclinic 
2	tetragonal 	4	triclinic 

1	2	3	4
halite	topaz	gypsum	albite

1	2	3	4
.	.	.	.
0	0	0	0
1	1	1	1
2	2	2	2
3	3	3	3
4	4	4	4
5	5	5	5
6	6	6	6
7	7	7	7
8	8	8	8
9	9	9	9

2. Match the description with the type of **mineral identification** it is describing.

- 1 this the mineral's scratchability
2 reflects light from its surface
3 breaks along smooth, flat planes
4 the colored powdered form of the mineral

_____ _____ _____ _____
lustre streak cleavage hardness

.	.	.	.
0	0	0	0
1	1	1	1
2	2	2	2
3	3	3	3
4	4	4	4
5	5	5	5
6	6	6	6
7	7	7	7
8	8	8	8
9	9	9	9

3. Which category of **rock family** belongs with which rock type described?

- 1 Igneous
2 Sedimentary
3 Metamorphic
4 Magma

_____ melted rock
_____ layered rock
_____ crystallized rock
_____ changed rock

.	.	.	.
0	0	0	0
1	1	1	1
2	2	2	2
3	3	3	3
4	4	4	4
5	5	5	5
6	6	6	6
7	7	7	7
8	8	8	8
9	9	9	9

4. Match the type of **weathering** with the description of what it is caused by.

- 1 mechanical
2 chemical
3 biological

_____ extreme change in temperature
_____ acid in plant roots
_____ frost wedging
_____ dissolving minerals

.	.	.	.
0	0	0	0
1	1	1	1
2	2	2	2
3	3	3	3
4	4	4	4
5	5	5	5
6	6	6	6
7	7	7	7
8	8	8	8
9	9	9	9

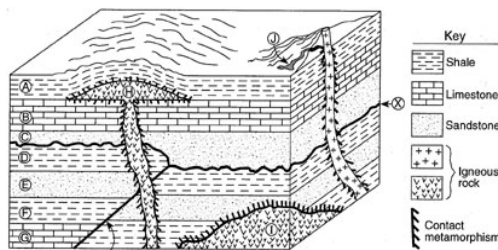
5. **Earthquakes** – are caused by the movement of rock where the crust has broken apart and the pieces move. Match the type of fault with each description

- 1 Normal Fault
2 Reverse Fault
3 Strike-slip Fault
4 Transform Fault

_____ plates squeeze together, rock above fault moves up and over
_____ plates move sideways, with sudden movements
_____ plates are jammed together, then move past each other
_____ plates move apart, rock above fault moves down

.	.	.	.
0	0	0	0
1	1	1	1
2	2	2	2
3	3	3	3
4	4	4	4
5	5	5	5
6	6	6	6
7	7	7	7
8	8	8	8
9	9	9	9

6. Using the **principle of superposition**, number the layers of rock in the correct order, beginning with the oldest.



_____ _____ _____ _____
oldest --- → --- → --- youngest

.	.	.	.
0	0	0	0
1	1	1	1
2	2	2	2
3	3	3	3
4	4	4	4
5	5	5	5
6	6	6	6
7	7	7	7
8	8	8	8
9	9	9	9